

CORRECTION

Open Access



Correction: Harnessing male germline epigenomics for the genetic improvement in cattle

Xiao Wang^{1,2,3†}, Wenlong Li^{1†}, Xia Feng¹, Jianbin Li³, George E. Liu⁴, Lingzhao Fang^{5*} and Ying Yu^{1*}

Correction: J Anim Sci Biotechnol 14, 76 (2023)
<https://doi.org/10.1186/s40104-023-00874-9>

Following publication of the original article [1], the authors reported a typo in the author's name and a typo in Fig. 1.

The author's name "Jianbin Li" was mistakenly typed as "Jianbing Li" and has been corrected.

The word "demen" in Fig. 1C should be changed to "semen".

[†]Xiao Wang and Wenlong Li are equally contributed to this work.

The original article can be found online at <https://doi.org/10.1186/s40104-023-00874-9>.

*Correspondence:

Lingzhao Fang
lingzhao.fang@qgg.au.dk
Ying Yu
yuying@cau.edu.cn

¹ Laboratory of Animal Genetics and Breeding, Ministry of Agriculture and Rural Affairs of China, National Engineering Laboratory of Animal Breeding, College of Animal Science and Technology, China Agricultural University, Beijing 100193, China

² Konge Larsen ApS, 2800 Kongens Lyngby, Denmark

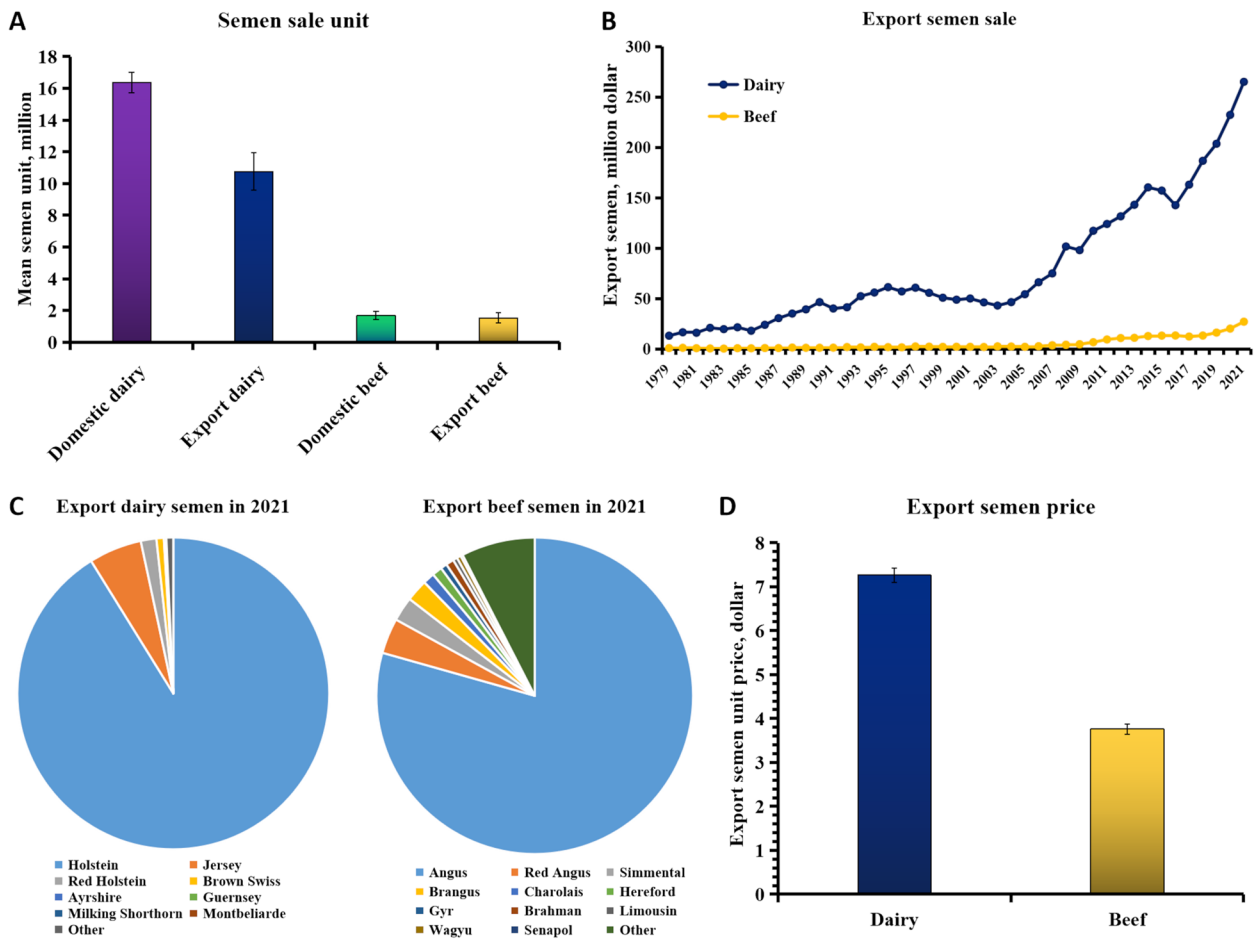
³ Institute of Animal Science and Veterinary Medicine, Shandong Academy of Agricultural Sciences, Jinan 250100, China

⁴ Animal Genomics and Improvement Laboratory, Agricultural Research Service, Henry A. Wallace Beltsville Agricultural Research Center, USDA, Beltsville, MD 20705, USA

⁵ Center for Quantitative Genetics and Genomics, Aarhus University, 8000 Aarhus, Denmark



The correct Fig. 1 should read:



The original article [1] has been updated.

Published online: 02 August 2023

Reference

1. Wang X, Li W, Feng X, et al. Harnessing male germline epigenomics for the genetic improvement in cattle. *J Anim Sci Biotechnol.* 2023;14:76. <https://doi.org/10.1186/s40104-023-00874-9>.

Ready to submit your research? Choose BMC and benefit from:

- fast, convenient online submission
- thorough peer review by experienced researchers in your field
- rapid publication on acceptance
- support for research data, including large and complex data types
- gold Open Access which fosters wider collaboration and increased citations
- maximum visibility for your research: over 100M website views per year

At BMC, research is always in progress.

Learn more biomedcentral.com/submissions

